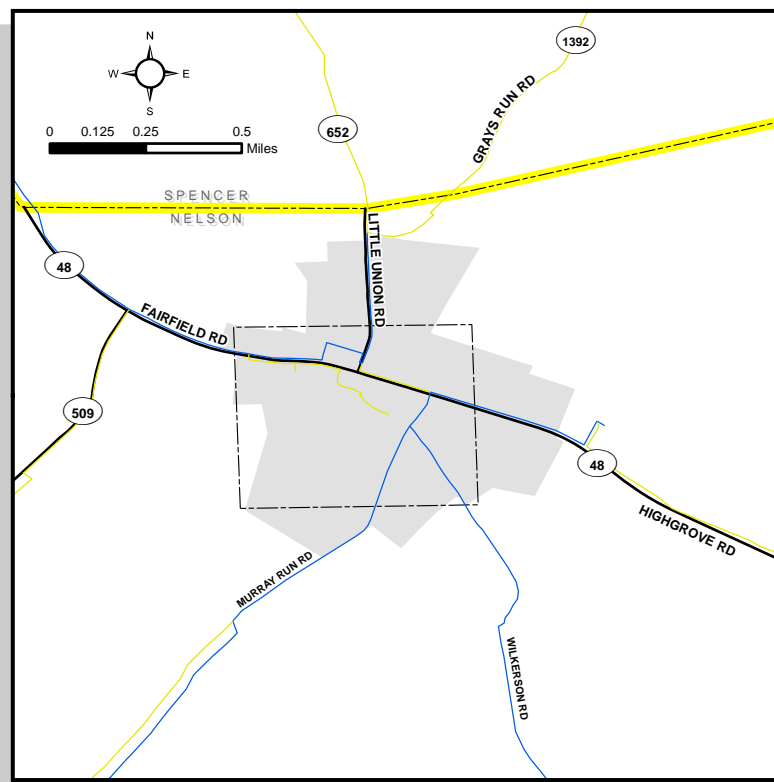


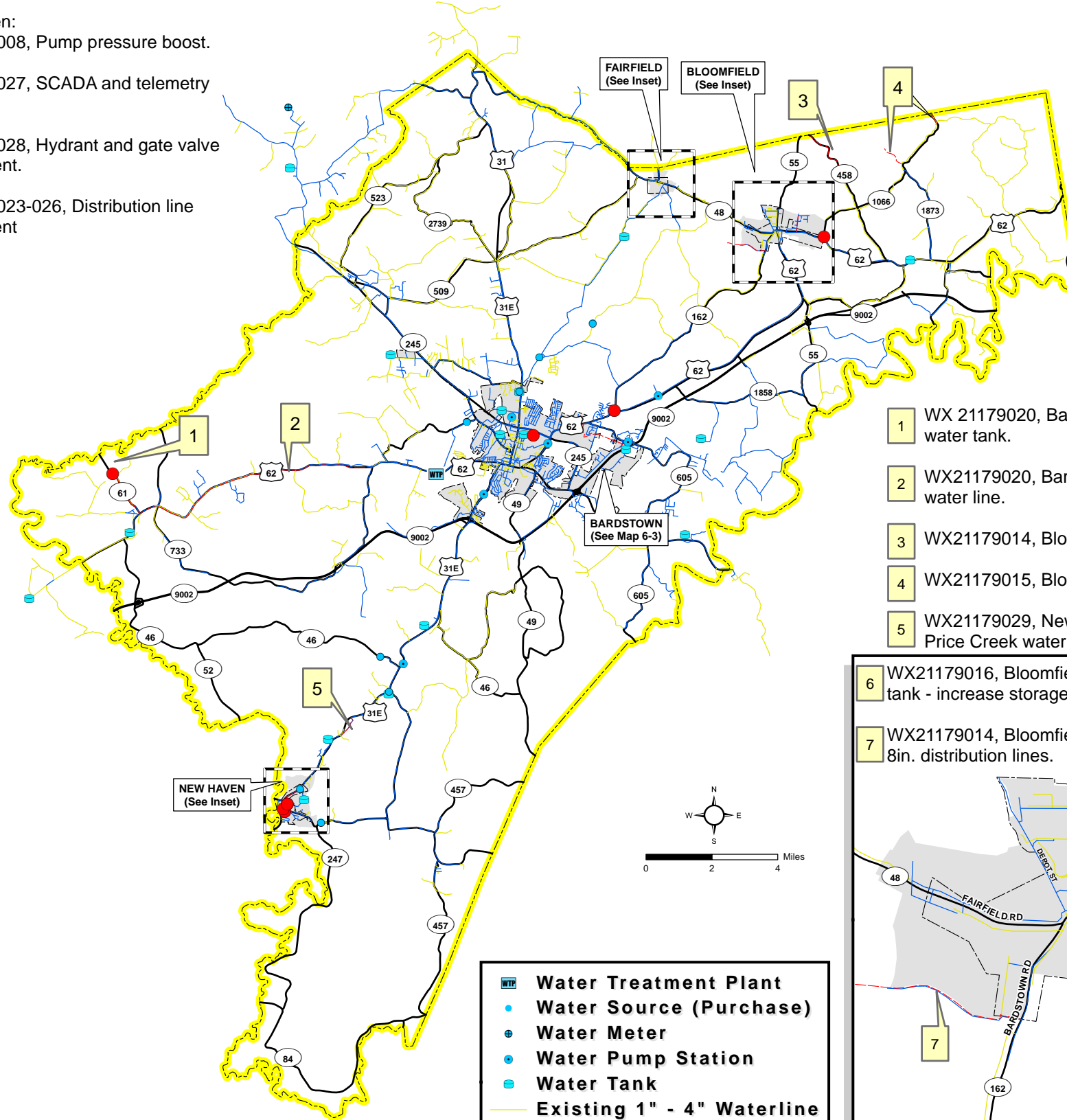
**NEW HAVEN**

- 8
- 9
- 10
- 11-14

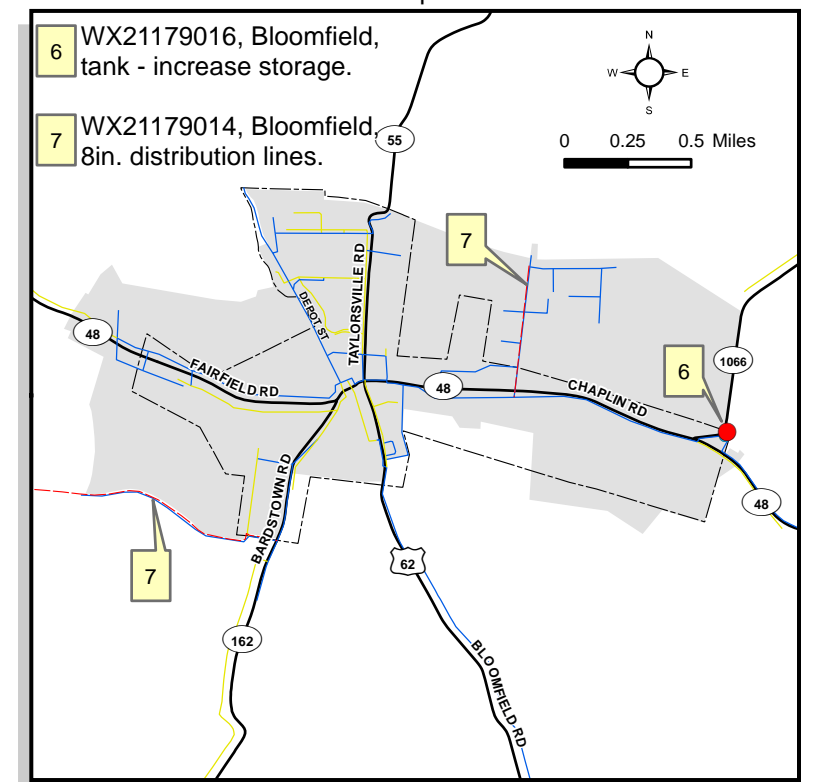
New Haven:  
 WX21179008, Pump pressure boost.  
 WX21179027, SCADA and telemetry system.  
 WX21179028, Hydrant and gate valve replacement.  
 WX21179023-026, Distribution line replacement



**FAIRFIELD**



- 1 WX 21179020, Bardstown Municipal Water Dept. 250,000 gal. water tank.
- 2 WX21179020, Bardstown Municipal Water Dept. 12 in. water line.
- 3 WX21179014, Bloomfield Water distribution line.
- 4 WX21179015, Bloomfield Water distribution line.
- 5 WX21179029, New Haven Municipal Water Works, Price Creek water line replacement.



**BLOOMFIELD**

- 6 WX21179016, Bloomfield, tank - increase storage.
- 7 WX21179014, Bloomfield, 8in. distribution lines.

**WTP** Water Treatment Plant  
 ● Water Source (Purchase)  
 ● Water Meter  
 ● Water Pump Station  
 ● Water Tank  
 — Existing 1" - 4" Waterline  
 — Existing 5" + Waterline  
 ● Project (point)  
 — Project (line)

**Map Disclaimer**

This map is an integral part of the Nelson County 2035: A Comprehensive Plan and must be used in conjunction with the text and other maps included in the Plan. This map is intended for general planning and is for reference and convenience only. This map is believed to be accurate but is not guaranteed without error. The Planning Commission assumes no liability for errors, omissions, or inaccuracies.

Projection = Kentucky State Plane Single Zone (NAD 83)  
 All scales and north arrows are view specific  
 Base data source(s) - KYOGIS, LTADD  
 Water line data source - KYOGIS, KYDOW

Figure 6-2  
**TOWN AND RURAL WATERLINES AND WATER SOURCES**